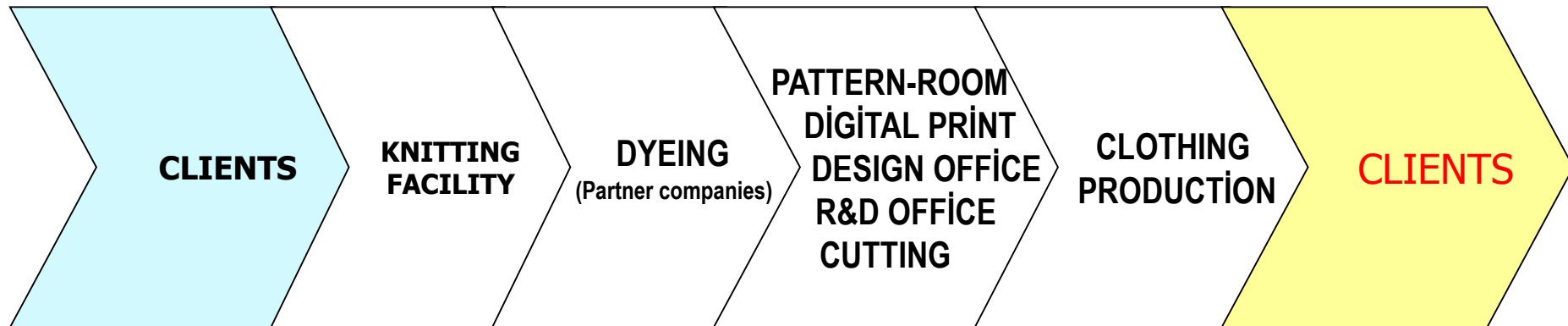

NEHİR GİYİM TASARIM

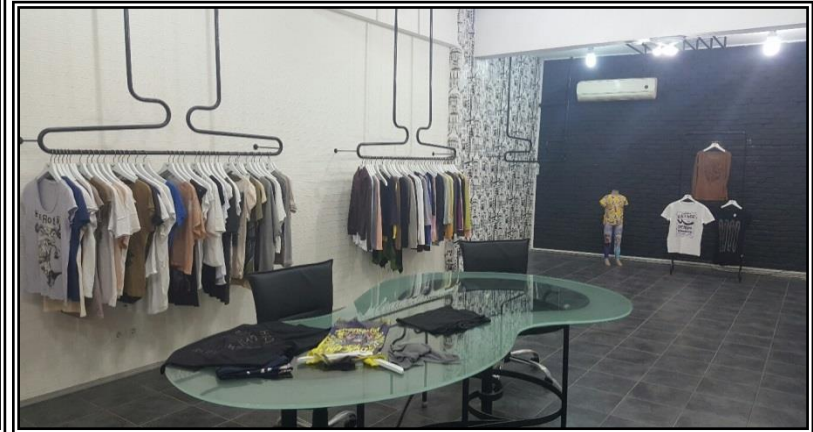
April 2016

BUSINESS SCOPE

- ❑ **Nehir has a **horizontal** set up;**
from the fabric production until the final product, every process is controlled and carried out in modern factories.



SHOWROOM & PATTERN-ROOM



BUSINESS SCOPE

NEHİR GİYİM TASARIM Headquarters (İstanbul)

The company operates in four main groups. Başak Hazır Giyim and Atlas Arge are approved by Sedex until July 2017.

- | | |
|--|---------------------------------------|
| <input type="checkbox"/> Piramit Fabric | Fabric manufacturing (İstanbul) |
| <input type="checkbox"/> Başak Hazır Giyim | Cut to box manufacturing (Safranbolu) |
| <input type="checkbox"/> Başak Hazır Giyim | R&D Office (Edirne) |
| <input type="checkbox"/> Atlas Arge Giyim* | Clothing manufacturing (Araç) |





STRENGTHS

- ❑ **High quality fabric and garment production**
- ❑ **The fabric assortment**
 - ❑ **Supreme, rib, two strands, three strands**
 - ❑ **Dri-fit, Dri-release**
 - ❑ **Jacquard fabrics, quilted fabrics**
 - ❑ **Cotton, cotton blend fabrics, lycra fabrics**
 - ❑ **Organic cotton**
 - ❑ **Printed fabrics**
- ❑ **Efficient Salesman sample production process**
- ❑ **Garment production**
- ❑ **100% LEAN production**
- ❑ **100% Product safety Regulations**

PIRAMIT KUMAŞ

PIRAMİT İSTANBUL

Annual capacity:

- ❑ 2.000t knit
- ❑ 1.200.000m weave
- ❑ 2 calendar press
- ❑ 1.800.000m print length
- ❑ 600.000 print pieces



CUT-TO-BOX PRODUCTION

❑ **BAŞAK**

(SAFRANBOLU)

❑ ***Cut to box
production***

❑ ***Logistics and distribution
center of all sewing facilities***

BAŞAK-Safranbolu

Cut-to-Box Clothing Production

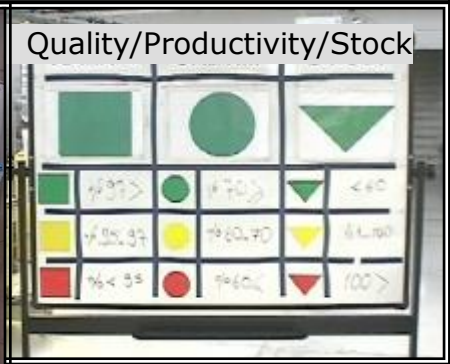
- ☐ 1 cutting table
- ☐ 1 digital printing machine
- ☐ 2 printing press
- ☐ 108 sewing machine

- ☐ 3 Heat transfers
- ☐ 2 Metal Detecting Conveyors
- ☐ Pattern Room
- ☐ Sample production Line



BAŞAK - Safranbolu

- ❑ **150.000 pcs/month basic tee**
- ❑ **4 (max 6) Lean sewing lines**
- ❑ **108 sewing machine**
- ❑ **Finishing&Packaging**



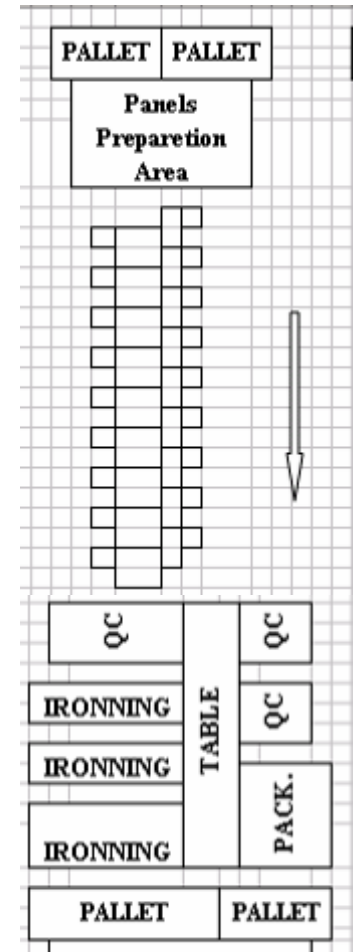
ATLAS– Araç/Kastamonu

Clothing company

- ☐ **100.000 pcs /month basic capacity**
- ☐ **4 sewing lines**
- ☐ **80 sewing machines**
- ☐ **Finishing&Packaging**

PRODUCTION SYSTEM

- ❑ Cut-to-Box; **LEAN** production system
- ❑ RFT (**Right the First Time**)
- ❑ Total **quality** management
- ❑ **Flexiblity** in production



PRODUCT SAFETY

- ❑ **All the finished products pass through the 100% metal detector before packaging.**



PRODUCT SAFETY

- ❑ When the needle is broken during production;
 - ❑ **Broken needle procedure** is followed.
 - ❑ The machines are stopped,
 - ❑ **The supervisor** finds all the pieces of the broken needle and reports,
 - ❑ After all the pieces of the broken needle are found, the new needle is attached,
 - ❑ In the case where a piece of a needle is not found, the garment is quarantined.



PRODUCT SAFETY

- ☐ **All accessories are QC checked as per AQL 1.5.**
- ☐ **Metal & cutting tools are tied down and secured.**
- ☐ **In order to avoid the damage to the employees and to products, all of the sharp objects are covered.**
- ☐ **“Product Safety” guidelines all around the factory.**

FABRIC INSPECTION

- ❑ **Certified Fabric Inspection Team**
 - ❑ **10% random inspection**
 - ❑ **The wash tests**
 - ❑ **Garnish fabric's fading control.**
 - ❑ **100% control in the Dyehouse.**

INDEPENDENT INCPECTION

- ❑ **Certified **Inline and Final Inspection** Team**
 - ❑ **Size set approvals**
 - ❑ **Product wash tests**
 - ❑ **Reference sample approval for production**
 - ❑ **Top of production sample approvals**
 - ❑ **Inline and final control as per AQL 1.5.**

CLIENT PORTFOLIO

- ☐ **LES ÉCLAIRES**
- ☐ **MISS GOODLIFE**
- ☐ **LI & FUNG**
- ☐ **REBELS**
- ☐ **PHILIPP PLEIN**
- ☐ **SISTER POINT**

CLIENT SERVICE PRIORITIES

- * Continuity in high-quality production**
- * On time delivery performance**
- * Short loading deadlines**
- * Competitive prices**
- * Quick customer service**

THANK YOU

